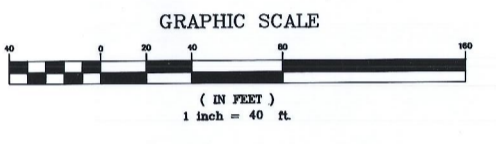
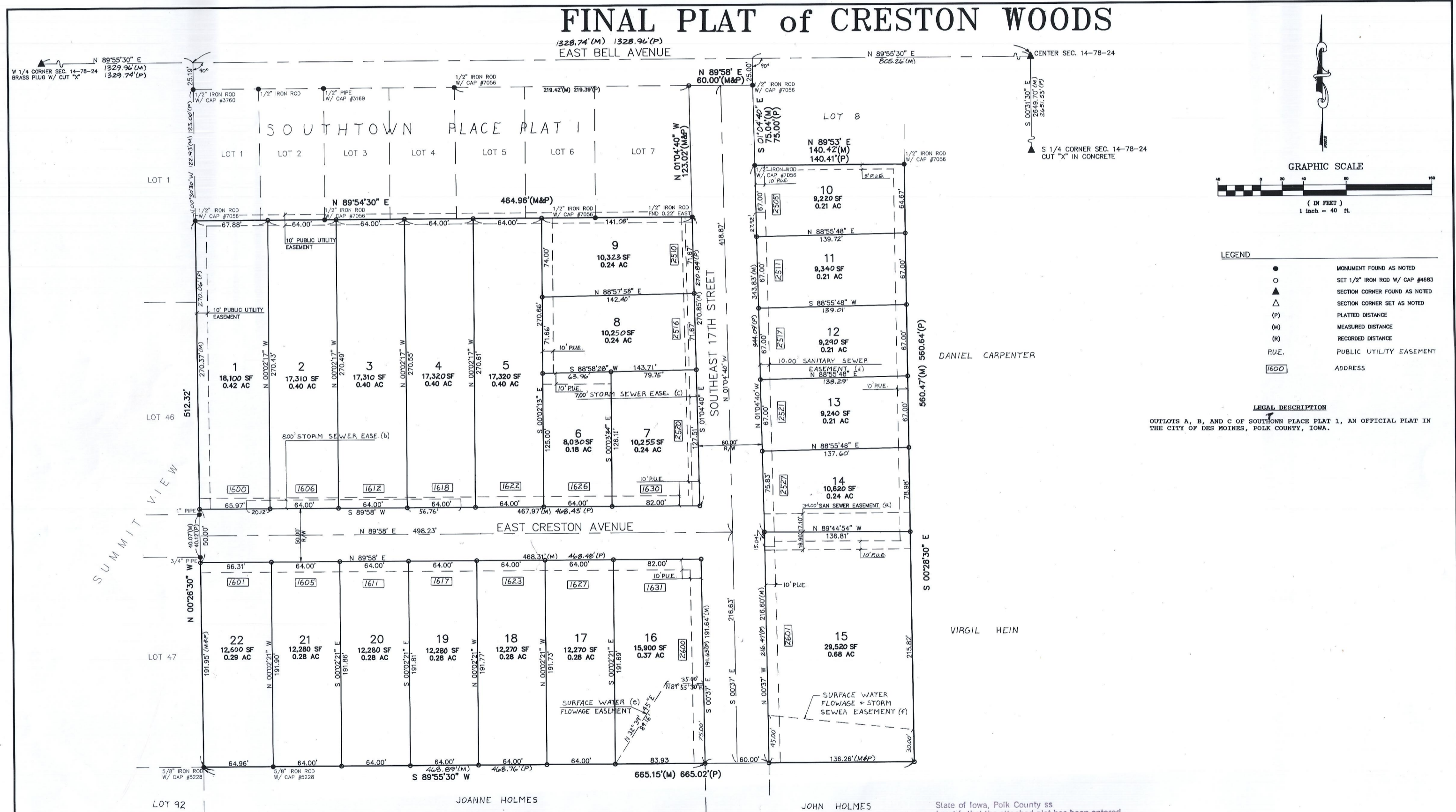


# FINAL PLAT of CRESTON WOODS

1328.74'(M) 1328.94'(P)  
EAST BELL AVENUE



- LEGEND
- MONUMENT FOUND AS NOTED
  - SET 1/2" IRON ROD W/ CAP #4683
  - ▲ SECTION CORNER FOUND AS NOTED
  - △ SECTION CORNER SET AS NOTED
  - (P) PLATTED DISTANCE
  - (M) MEASURED DISTANCE
  - (R) RECORDED DISTANCE
  - P.U.E. PUBLIC UTILITY EASEMENT
  - [1600] ADDRESS

LEGAL DESCRIPTION  
OUTLOTS A, B, AND C OF SOUTHTOWN PLACE PLAT 1, AN OFFICIAL PLAT IN THE CITY OF DES MOINES, POLK COUNTY, IOWA.



State of Iowa, Polk County ss  
I certify that the attached plat has been entered of record in the offices of the Polk County Auditor and Assessor this 14 day of Sept, 1992  
TOM PARKINS, County Auditor  
By Thomas Staffa Deputy

ALL CORNER MONUMENTS TO BE SET WITHIN ONE YEAR OF RECORDING PLAT

NO.	REVISION	DATE	BY
1	DISTANCES & BEARINGS	04/11/92	KANE
2	LOTS, EASEMENTS	7/30/92	LEE
3	LOTS, DIMENSIONS	01/11/93	KANE
4	DIMENSIONS, BEARINGS	07/18/93	KANE
5	DIMENSIONS, AREAS	07/25/92	KANE

SURVEYING CERTIFICATION  
I hereby certify that this Plat and Survey was made by me or under my direct personal supervision, and that I am a duly registered Land Surveyor under the laws of the State of Iowa.  
Cecilia M. O'Brien  
Date: Mar 16, 1992

# FINAL PLAT of CRESTON WOODS

FOR: MIKE BARNES & STEVE SMITH  
224 S.W. 31st STREET  
DES MOINES, IOWA 50315  
(515) 282-2241

LOCATION: DES MOINES, POLK COUNTY, IOWA  
SW 1/4 14-78-24

SCALE: 1"=40'  
CAD FILE: D:\DRAW\292016FP

DESIGN BY: DJS  
CHECKED BY: DM  
WORK ORDER NO.: 292016

DRAFTSMAN: KANE  
DATE: 03/15/92  
FILE NO.: D-292016FP

ANDERSON-BOGERT  
ENGINEERS & SURVEYORS, INC.  
601 SW 9th ST. SUITE H  
DES MOINES, IOWA 50309  
(515) 288-4823

789-1